



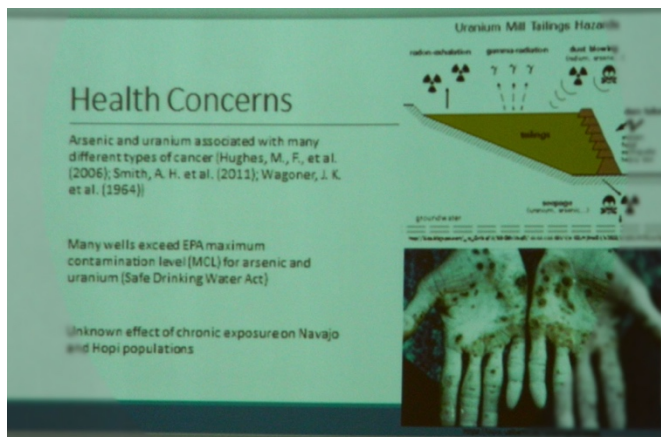
## New Investigator Projects Spring 2015

### Community Involvement with Contamination of Navajo Lands

By Tommy Rock

Hi, my name is Tommy Rock; I am a member of the Navajo Nation from Monument Valley, Utah. I am of the Salt Clan, born for the Many Goats clan, my maternal grandfather is Bitter Water Clan and my paternal grandfather is Reed People Clan.

There are many environmental factors that influence public health in Indigenous Communities. One such environmental factor are abandon uranium mines throughout Navajo Nation which still affects the people and the land. I hope to be able to integrate the issue of health, environment, and culture especially uranium mining into more informed decision making on tribal lands.



*Health Concerns related to Arsenic and Uranium exposure.*

The purpose of my project with Center for American Indian Resilience (CAIR) is to start a dialogue about traditional Indigenous food contamination and policy development using Navajo Fundamental Law. I collaborated with the Forgotten People to accomplish this project. The Forgotten People are a grassroots organization that focus on social and environmental justice on the western portion of the Navajo Nation.

The Forgotten People received approval from the trading post owner to use one of their rooms behind the deli and laundromat as a meeting space.



*Community Meeting in Cameron.*

All four meetings took place there. We distributed flyers to notify the community of our meetings and even had one community member going door to door. Lunch and snacks were provided by myself, Tommy Rock.

Our meetings consist of the community members of Cameron, Arizona. Our first meeting was in December, community members were not present possibly due to the Christmas shopping season and the Western Agency meeting in Flagstaff. The next three meetings went better with improved attendance and participation from the community members. They had a great discussion in each of the last three meetings.

Our last meeting took place with a tour at Dr. Jani Ingram's lab at Northern Arizona University (NAU).



*Tommy demonstrating sample processing in the lab to community members.*