



# Guide to **ONLINE STUDENT RESOURCES**

*Helping students find what they need*



**NAUgo**  
*Your NAU  
resource app!*

Available for iOS  
and Android.



## **Academic & Career Support**

### Academic Success Centers

(928) 523-5524 | [nau.edu/asc](http://nau.edu/asc)

Offers limited free online tutoring and learning strategies support, online Peer Academic Coaching, and live online graduate test prep for GRE, GMAT, MCAT, and LSAT at a reduced cost.

### Career Development

(928) 523-1087 | [nau.edu/career](http://nau.edu/career) | [nau.edu/studentemployment](http://nau.edu/studentemployment) | [nau.edu/internships](http://nau.edu/internships) | [nau.edu/career/online](http://nau.edu/career/online)

Provides career advising, workshops/guest lectures, and online career education resources. Serves as a centralized resource for student employment and internships. Oversees online and on-campus recruitment. All services available virtually.

### Cline Library

(928) 523-2173 or (800) 247-3380  
[nau.edu/library/onlinestudents](http://nau.edu/library/onlinestudents)

Provides online students with access to a wide variety of services, including research assistance, 3D printing, course reserves, live chat options, access to other Arizona libraries, and document delivery services.

### Disability Resources

(928) 523-8773 | [nau.edu/dr](http://nau.edu/dr)

Provides services and accommodations at no cost to students with disabilities. DR assists with a broad spectrum of disabilities, including but not limited to individuals with physical, medical, sensory, learning, and mental health disabilities. Available virtually.

### Graduate College

(928) 523-4348 | [nau.edu/graduate-college](http://nau.edu/graduate-college)

Students can explore graduate degree programs or seek mentoring or professional development opportunities with the NAU Graduate College.

### Handshake

[nau.edu/handshake](http://nau.edu/handshake)

An online portal for on-campus and off-campus job postings, career fairs, and other career events. Now with virtual options to meet recruiting employers!

### Office of the Registrar

(928) 523-5490 | [nau.edu/registrar](http://nau.edu/registrar)

Assists students with academic records & course enrollment.

### University Advising

(928) 523-4772 | [nau.edu/advising](http://nau.edu/advising)

Students can find their assigned advisor in LOUIE. Reach out to an advisor for support with class scheduling, academic resources, general university guidance, and more. Setting up an appointment is easy at: [nau.edu/appointments](http://nau.edu/appointments)

### University Writing Commons (UWC)

(928) 523-7745 | [nau.edu/uwc](http://nau.edu/uwc)

Provides one-on-one online writing assistance for students at all stages in the writing process across all programs and disciplines.



## **Financial Support**

### Childcare Voucher

(928) 523-5181 | [nau.edu/childcare](http://nau.edu/childcare)

Student parents may be eligible to receive an award to help with the cost of childcare.

### Course Material Assistance Program

(928) 523-5181 | [nau.edu/cmap](http://nau.edu/cmap)

Assists students with limited financial means in obtaining required course materials for classes by providing a \$200 credit at the NAU Bookstore. Materials may be mailed.

### Emergency Loan Program

(928) 523-3122 | [nau.edu/sdas/emergency-loans](http://nau.edu/sdas/emergency-loans)

Emergency loans of up to \$300 are available to all students. Must be repaid within 6 weeks of disbursement.

## **Financial Support Continued**

### **Lumberjack Emergency Assistance Fund**

(928) 523-5181 | [nau.edu/LEAF](http://nau.edu/LEAF)

Provides funding to assist currently enrolled NAU students facing unforeseen crises or hardships that require immediate one-time financial assistance.

### **Office of Scholarships and Financial Aid**

(928) 523-4951 | [nau.edu/finaid](http://nau.edu/finaid)

Assists students in applying for and managing financial resources for college, including loans, scholarships, and grants. NAU School Code 001082

### **Student Service Center**

(928) 523-9501 | [nau.edu/student-service-center](http://nau.edu/student-service-center)

A first stop for triaging registration, financial aid, and student account issues. Enrollment Management Coordinators are available online.



## ***Health & Wellness***

### **Campus Health Services: Counseling Services**

(928) 523-2261 | [nau.edu/counseling](http://nau.edu/counseling)

Provides telehealth counseling, consultation, and referral services for all online students who reside in Arizona.

### **Campus Health Services: Health Promotion**

(928) 523-2131 | [nau.edu/healthpromotion](http://nau.edu/healthpromotion)

Offers programs and resources to help students stay healthy and safe. Topics include relationships, sexual health, sexual violence, stress and substance use. Online health and wellness resources are available.

### **Crisis Response Network**

(877) 756-4090 or text “connect” to 741741  
[crisis.solari-inc.org](http://crisis.solari-inc.org)

Available 24/7/365 for anyone experiencing a mental health crisis.

### **Jacks Care 24/7**

(866) 656-9983 | [myssp.app/us/home](http://myssp.app/us/home)

Jacks Care 24/7 is a partnership between Counseling Services and MySSP offering free and confidential mental health and wellbeing support to NAU students anytime, anywhere. To connect to a counselor via text, chat, or telehealth, call 866-656-9983 or download the MySSP app.

### **UCAN University Coaching for Activity and Nutrition**

(928) 523-2566 | [nau.edu/ucan](http://nau.edu/ucan)

Highly trained student health coaches provide support for NAU students, faculty, and staff who want to make changes related to nutrition, physical activity, sleep, and stress management.





## ***Student Support & Advocacy***

### **Campus Inclusion Team**

[nau.edu/campus-inclusion-team](http://nau.edu/campus-inclusion-team) |  
[campusinclusionteam@nau.edu](mailto:campusinclusionteam@nau.edu)

The Campus Inclusion Team fosters a campus community that honors diversity, freedom of expression, and inclusiveness through individual support, campus trainings, and resource referrals.

### **Dean of Students: Lumberjack CARE Team**

(928) 523-5181 | [nau.edu/CARECenter](http://nau.edu/CARECenter)

The Lumberjack Case Management, Advocacy, Resources, & Essential Needs (CARE) Center assists students with support and advocacy, including crisis management, problem solving, and campus referrals. The office to go to if you don't know where to go.

### **NAU SAFE App**

[nau.edu/nausafe](http://nau.edu/nausafe)

The NAU SAFE app is NAU's emergency message dissemination system. Anyone can download the app on their mobile device. Be sure to mark your campus locations in the Notification Preferences section to receive relevant safety alerts.

### **Office for the Resolution of Sexual Misconduct (ORSM) Title IX Institutional Compliance, Prevention & Response**

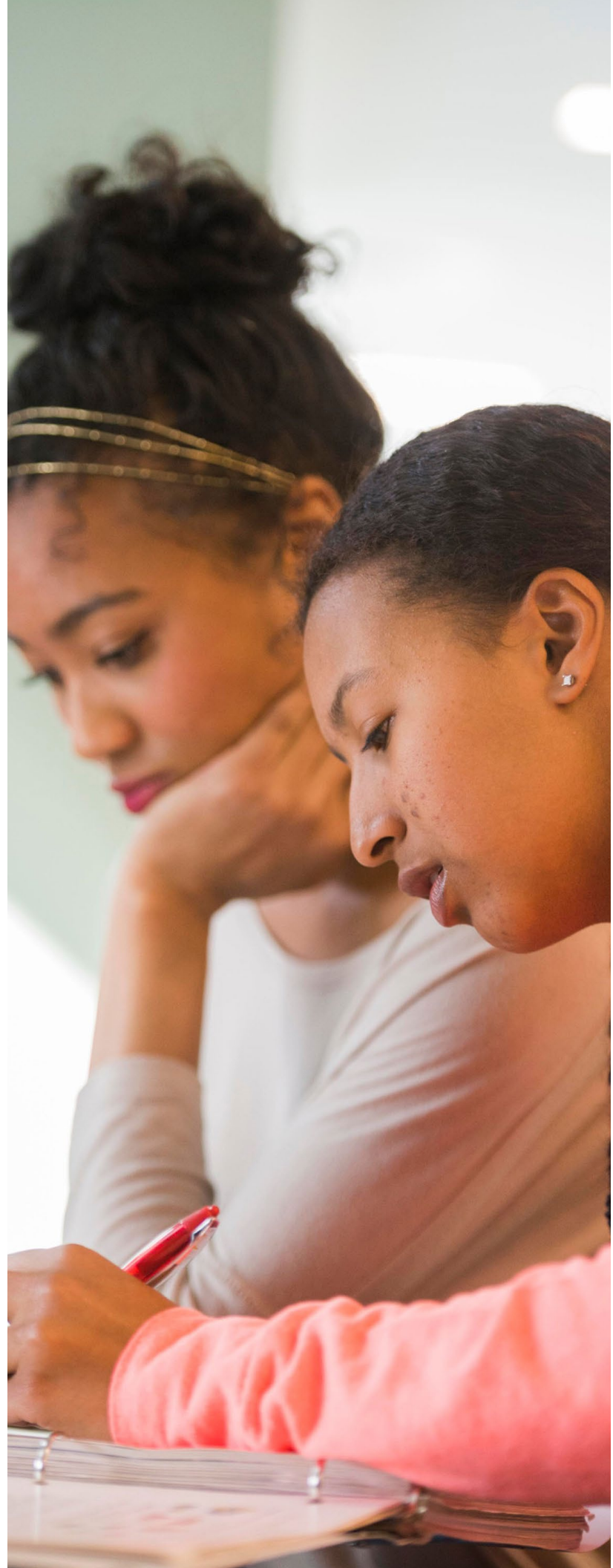
(928) 523-5434 | [nau.edu/title-ix](http://nau.edu/title-ix)

The ORSM receives and addresses complaints of sex/gender based-harassment, including sexual assault and other forms of sexual misconduct, using formal and informal processes; the Title IX Coordinator has independent authority to halt and correct discrimination, harassment, and behavior that constitutes sexual misconduct.

### **Student Legal Counsel**

(928) 523-4971 | [nau.edu/legal](http://nau.edu/legal)

The Student Legal Counsel is a service provided by ASNAU to assist NAU students with issues of a legal nature.



## **Mentoring & Support**

### First-Generation Programs

(928) 523-6980 | [nau.edu/firstgen](http://nau.edu/firstgen)

Offers support for first-generation students through peer mentoring and student-focused guidance.

### Jacks Online Peer Mentoring

Transfer & Online Connections

(928) 523-1802 | [nau.edu/jacksonline](http://nau.edu/jacksonline)

All new, online students are automatically assigned a peer mentor for their first semester. Mentors are successful online students who will assist with tools like Bb Learn, LOUIE, and support student success in online courses.

### Office of Inclusion: Multicultural and LGBTQIA Student Services (IMQ)

(928) 523-5656 | [nau.edu/inclusion](http://nau.edu/inclusion)

Culturally inclusive services, events and support for students of all backgrounds are available virtually.

### Office of Indigenous Student Success

(928) 523-8086 | [nau.edu/iss](http://nau.edu/iss)

Offers guidance and personal cultural support to Indigenous students regarding academics, financial literacy, community connections, and adjusting to college.

### Transgender and Gender-Diverse Resources

(928) 523-6971

Students are encouraged to get in touch for resources on Preferred and Legal Name change processes and Trans healthcare.

### Veteran & Military Services

(928) 523-8387 | [nau.edu/vets](http://nau.edu/vets)

Offering services and resources for Veterans and military-connected students.



## **Student Tools**

### Appointment Scheduler

[nau.edu/appointments](http://nau.edu/appointments)

An online tool for students to schedule appointments with academic advisors, support services, and mentors.

### BbLearn

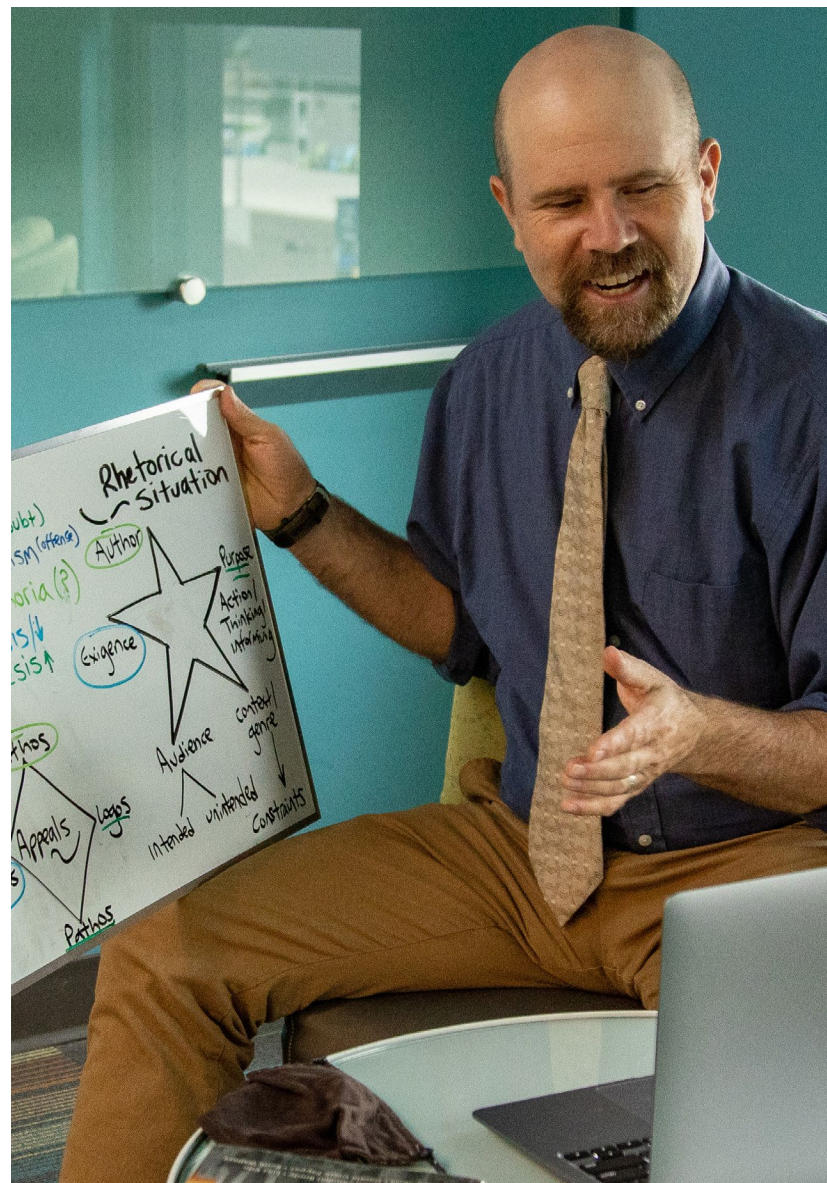
[nau.edu/its/blackboard-learn](http://nau.edu/its/blackboard-learn)

Blackboard Learn is NAU's Learning Management System for online classes and online resources for in-person classes.

### Student Technology Center

(888) 520-7215 or (928) 523-9294 | [nau.edu/stc](http://nau.edu/stc)

Students can speak directly to a tech via phone or email for technical issues regarding LOUIE, BbLearn, OpenLMS, and more. Available 24/7 during the fall and spring semesters.





## **Advising & Degree Plans**

### **Academic Advising Report**

[nau.edu/registrar/academic-advisement-report](http://nau.edu/registrar/academic-advisement-report)

A report that assists students in tracking their progress to graduation. It can also be used in conjunction with Jacks Planner. Academic Requirements can be found in LOUIE.

### **Jacks Path**

[jackspath.nau.edu](http://jackspath.nau.edu)

An online tool where students can determine what credits will transfer to NAU from other institutions.

### **Jacks Planner**

[nau.edu/jacksplanner](http://nau.edu/jacksplanner)

An interactive academic planning tool students can utilize to plan course sequencing from term to term.



## **Involvement Opportunities**

### **Center for International Education**

(928) 523-2409 | [nau.edu/cie](http://nau.edu/cie)

NAU's hub for all things international: from international student admissions and education abroad to incorporating a global perspective into our academic and social programs.

### **NAU Student Organizations**

(928)523-1145 | [nau.edu/NAUClubs](http://nau.edu/NAUClubs)

Connect with the Lumberjack family and build your leadership skills by joining a NAU student organization.



## **Additional Resources**

Visit [nau.edu/online](http://nau.edu/online) and [nau.edu/online/student-resources](http://nau.edu/online/student-resources) for more support - including tech help, online advising, and online library resources.

Explore the "Learning Online@NAU" Bb Learn certificate course for online students: [nau.edu/bb-self-enroll/347838](http://nau.edu/bb-self-enroll/347838)