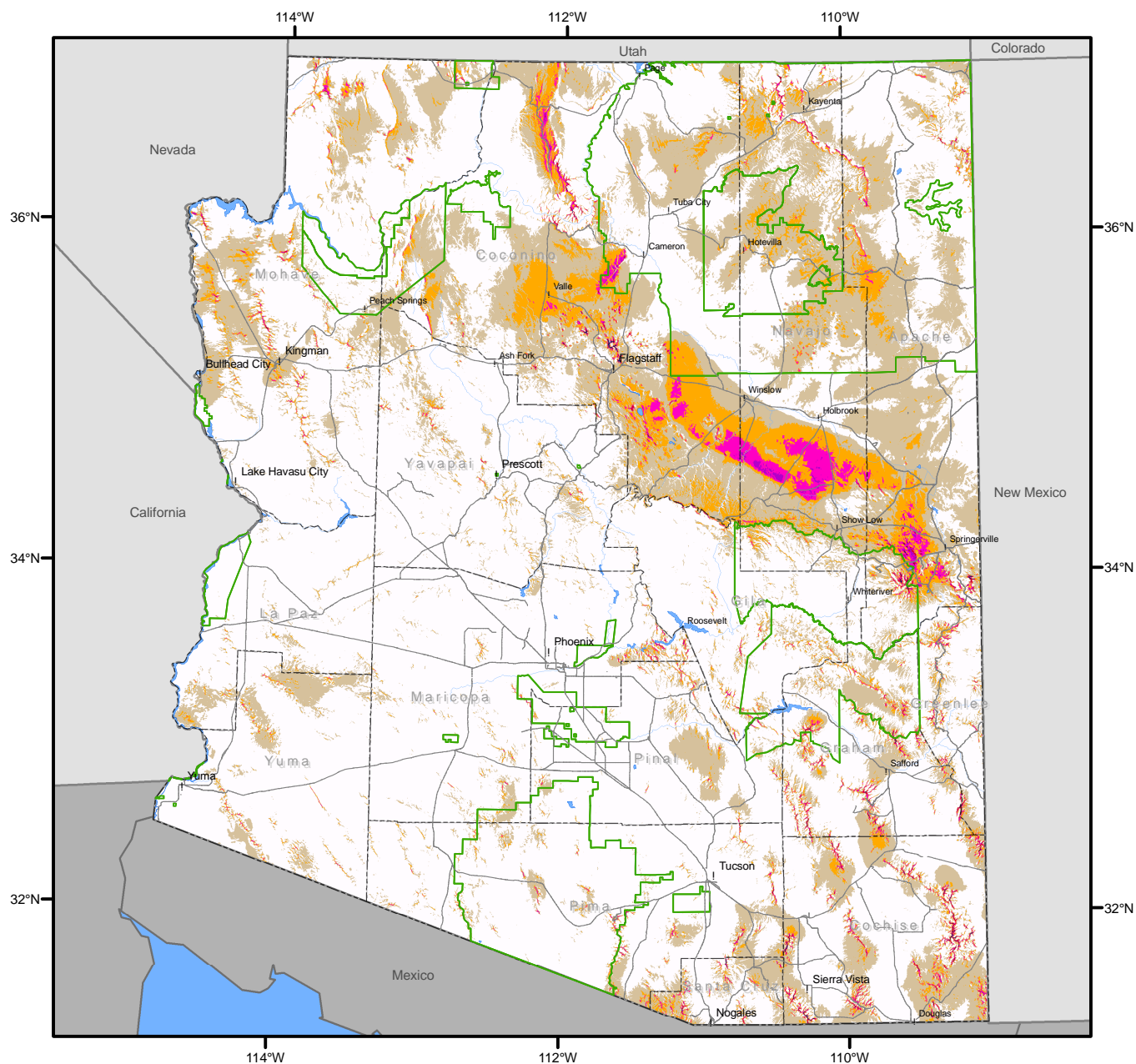


State of Arizona

Average Annual Wind Resource 230 ft (70m)



Created by: Grant Brummels
 Date of Creation: 7/6/2005
 For more information contact:
 Dr. Earl Duque
Earl.Duque@nau.edu

Projection:
 UTM, Zone 12, WGS84
 Spatial Resolution of
 Wind Resource Data: 200m

**Sustainable
 Energy Solutions**
www.ses.nau.edu



**NORTHERN
 ARIZONA
 UNIVERSITY**

Wind Power Classification

Wind Power Class	Wind Power Density (W/m^2)	Wind Speed (mph)
1 Poor	0 - 200	0.0 - 12.3
2 Marginal	200 - 300	12.3 - 14.1
3 Fair	300 - 400	14.1 - 15.7
4 Good	400 - 500	15.7 - 16.8
5 Excellent	500 - 600	16.8 - 17.9
6 Outstanding	600 - 800	17.9 - 19.7
7 Superb	> 800	> 19.7

Legend

- County Boundary
- Indian Reservation
- Rivers and Water Bodies
- Major Roads

2

0 12.5 25 50 75 100
 Miles