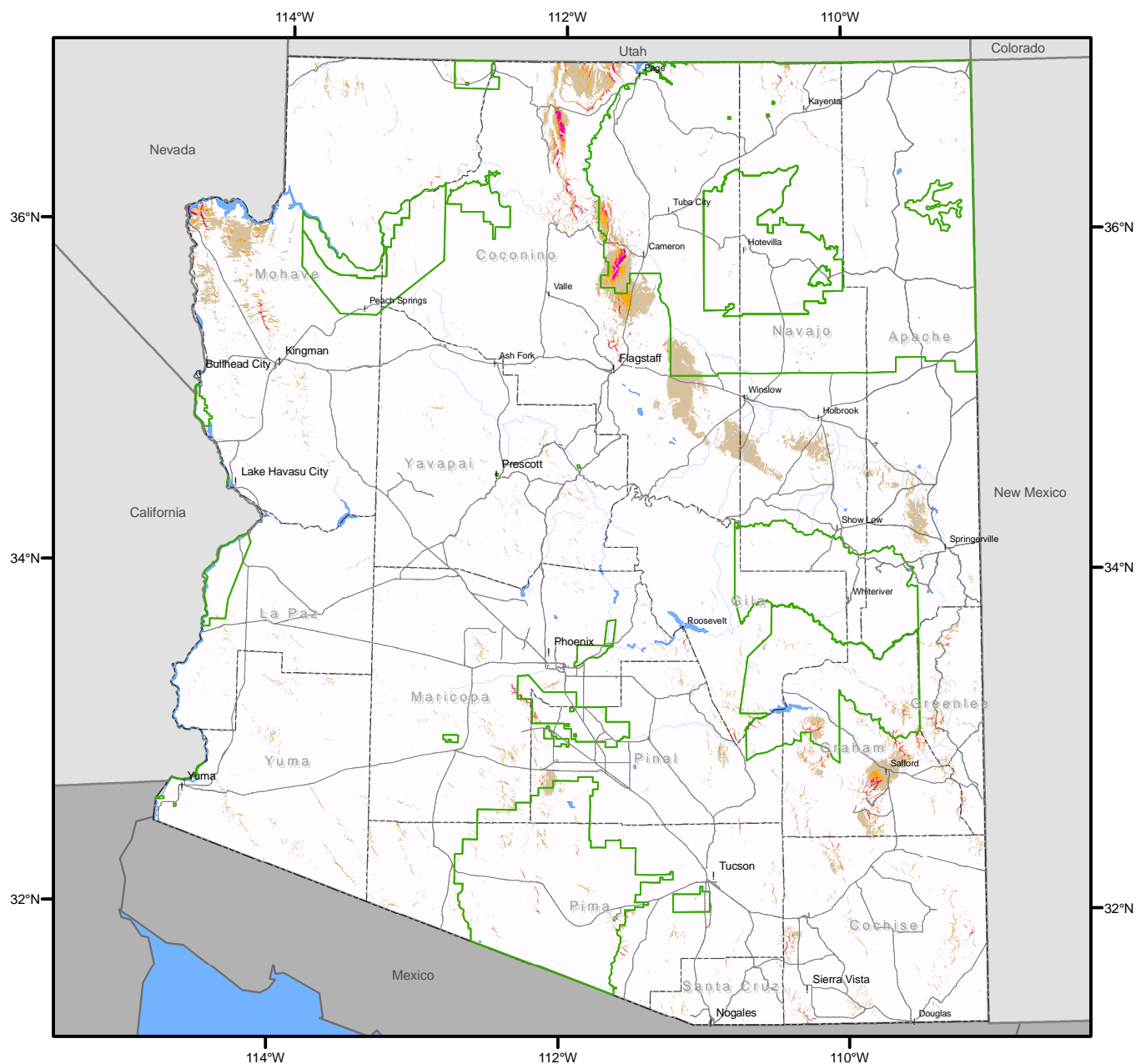


# State of Arizona

## July Wind Resource 164 ft (50m)



Created by: Grant Brummels  
 Date of Creation: 7/6/2005  
 For more information contact:  
 Dr. Earl Duque  
[Earl.Duque@nau.edu](mailto:Earl.Duque@nau.edu)

Projection:  
 UTM, Zone 12, WGS84  
 Spatial Resolution of  
 Wind Resource Data: 200m

**Sustainable  
 Energy Solutions**  
[www.ses.nau.edu](http://www.ses.nau.edu)



**NORTHERN  
 ARIZONA  
 UNIVERSITY**

### Wind Power Classification

Wind Power Class	Wind Power Density (W/m <sup>2</sup> )	Wind Speed (mph)
1 Poor	0 - 200	0.0 - 12.3
2 Marginal	200 - 300	12.3 - 14.1
3 Fair	300 - 400	14.1 - 15.7
4 Good	400 - 500	15.7 - 16.8
5 Excellent	500 - 600	16.8 - 17.9
6 Outstanding	600 - 800	17.9 - 19.7
7 Superb	> 800	> 19.7

### Legend

- County Boundary
- Indian Reservation
- Rivers and Water Bodies
- Major Roads

2

0 12.5 25 50 75 100  
 Miles