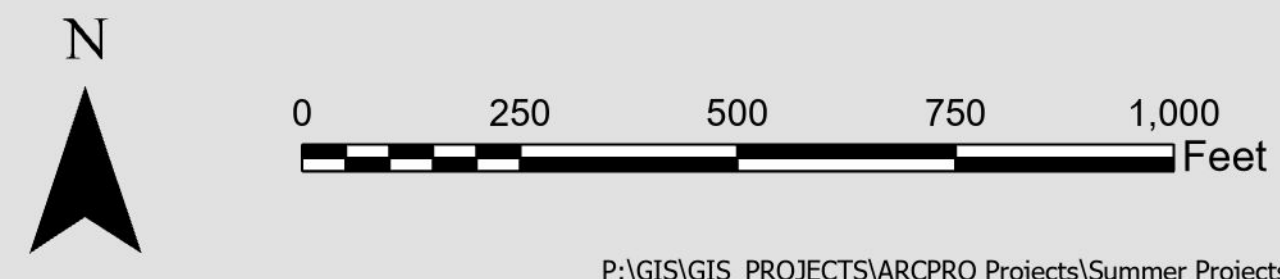




2023 SUMMER PROJECTS



P:\GIS\GIS_PROJECTS\ARCPRO Projects\Summer Projects Map

- Project Number & Project**
- (A) 09.190.231-Physical Sciences Cooling for Lecture Halls
 - (B) 09.721.231-Nursing Space Optimization
 - (C) 09.984.231-88D HVAC Control Upgrade
 - (D)09.001.231-Skydome Roof Replacement
 - (E) 09.210.225-Biological Sciences Mechanical Renovations
 - (F) 09.690.231- Engineering Room 118 Industry 4.0 Lab
 - (G) 09.540.221- ITS Humidification Issues
 - (H) 09.240.222-North Plant North Node HVAC Upgrades
 - (I) 09.004.222-SBS West FLS Code Correction
 - (J)09.985.211-New South Engineering Lab Building
 - (K) 09.770.232- Building 77 LOS Shop Ventilation
 - (L) 10.050.212-Tunnel Investigation and Repair Near Eastburn
 - (M) 09.660.231-Health Prof Room 101 Reupholster Fixed Seating
 - (N) 09.500.231-Campus Heights Replace Exterior Stairs Phase 2
 - 09.002.238-Multi Building Flooring Repairs
 - 09.004.232-Fire Sprinkler Backflow Prevention
 - (O) 09.002.235-Parking Structure Maintenance
 - 10.010.231-Civil Utility Repairs 2023
 - 08.020.231-Parking Lot Repairs
 - (T) 09.660.233-Health and Professions Roof and Windows Replacement
 - (U) 09.280.231-Cline Library Assembly Hall Seat Replacement
 - (V) 09.600.231-SAS Rooftop Safety Repairs
 - (W) 09.600.221-SAS Room 221 Split
 - (X) 09.350.221-Bookstore Add Forced Air Cooling
 - 08.080.202-Flagstaff Campus logo Updates
 - 09.999.191-Bus Storage and Maintenance Facility
 - (A1) 08.020.232-Asphalt 2023 Streets
 - (B1)09.400.231-McDonald Heating Repair
 - (C1) 09.560.231-AR&D Chiller Replacement
 - (D1) 09.002.236-Roseberry/Gillenwater Renovations
 - (E1) 09.140.231-NACC EIFS Repair
 - 13.800.231-Hat Ranch House Repair
 - (G1) 09.660.234-Health Professions paint Interior Hallways
 - (H1) 09.020.231-Blome 200/204 Office Reconfigure
 - (I1) 09.510.232-Babbitt Room 201 Add Offices
 - (J1) 09.510.231-Babbitt President Office Update
 - (K1) 09.160.223-Communications Second Floor Hallway Gallery Wall
 - (L1) 09.660.222-Health Professions Rooms 120,122,126
 - (M1) 09.240.221-Steam System Maintenance Upgrade
 - (N1) 09.502.211-McKay Apartment Flooring
 - (O1) 09.001.211-University Union (30A) Roof Repair
 - (P1) 09.750.231-Suits Pedestrian Bridge Repair
 - (Q1) 09.480.231-Reilly Hall FLS & Mechanical Upgrades
 - (R1) 09.470.231-Atmospheric Research Additional Roll-Off Roof Telescope
 - (S1) 09.420.221-Sechrist FLS & Mechanical Renovations

- Campus Living Facilities
 - Support Facilities
 - Parking Structures
 - Academic Buildings
 - Road Work
- University and Knoles Dr.
Closure MAY 15th - JUNE 16th

BUILDING LIST (ALPHABETICAL)

| BUILDING NAME: | BLDG # |
|---|--------|
| Adel Mathematics | 26 |
| Allen Hall | 46 |
| Anthropology Laboratory | 49 |
| Applied Research & Development | 56 |
| Aquatic and Tennis Complex | 86 |
| Ardrey Auditorium | 37A |
| Ashurst | 11 |
| Atmospheric Observatory/Lutz Telescope | 47 |
| Babbitt Academic Annex | 23 |
| Babbitt Administrative Center | 51 |
| Beaver Street House | 7A |
| Bilby Research Center | 52 |
| Biological Sciences | 21 |
| Biological Sciences Annex | 21B |
| Biology Greenhouse | 18A |
| Blome | 2 |
| Bookstore | 35 |
| Bury | 8 |
| Campbell Hall | 6 |
| Campus Heights Apartments | 50 |
| CECMEE Field Station | 97 |
| Centennial (Parking & Human Resources) | 91 |
| Ceramics Complex | 80 |
| Ceramics Clay Mixing Facility | 80B |
| Chemical Storage Facility | 78 |
| Cline Library | 28 |
| Communication | 16 |
| Cowden Learning Community | 38 |
| Drury Inn | 58A |
| du Bois Center | 64 |
| Eastburn Education Center | 27 |
| Education Annex | 23A |
| Engineering Research | 98C |
| Engineering & Technology | 69 |
| Ernest Calderon Learning Community | 29 |
| Extended Campus Operations Center | 98D |
| Facility Services | 77 |
| Facility Services Annex | 77A |
| Fountain Residence | 89 |
| Gabaldon Hall | 53 |
| Gammage | 1 |
| Gateway Student Success Center | 43 |
| Geology | 12 |
| Geology Annex | 31 |
| Gillenwater Hall | 31 |
| Grannys | 99B |
| Grannys C-House | 99C |
| Grannys D-Duplex | 99D |
| Greenhouse Complex | 79 |
| Health & Learning Center | 25 |
| Health Professions | 66 |
| High Country Conference Center | 58 |
| Hilltop Townhomes | 59 |
| Hogan | 82B |
| Honors Living & Learning Community | 41 |
| Hospitality Resource & Research Center | 32 |
| HRM/Hughes Hotel & Restaurant Mgmt. | 33A |
| Huffer Lane Acquisition | 96 |
| Humphreys Office Building | 7B |
| Information Systems | 54 |
| Information Systems Building Annex | 54B |
| Institute for Human Development | 27A |
| International Pavilion | 50A |
| KNAU & Campus Transit | 83 |
| Laboratory Research | 76 |
| Learning Resource Center | 61 |
| Liberal Arts | 18 |
| Lumberjack Stadium | 25 |
| McConnell Hall | 62 |
| McDonald Hall | 40 |
| McKay Village | 50B |
| Milton Property | 94 |
| Morton Hall | 4 |
| Mountain View Hall | 55 |
| Native American Cultural Center | 14 |
| North Hall | 5 |
| North Heating & Cooling Plant | 24 |
| North Union | 3 |
| Nursing | 72 |
| Old Main | 10 |
| Performing & Fine Arts | 37 |
| Peterson | 22 |
| Physical Sciences | 19 |
| Pine Ridge Village | 95 |
| Police Department (NAU) | 98A |
| Ponderosa | 92 |
| Printing Services | 57 |
| Prochnow Auditorium | 3A |
| Purchasing Services | 98B |
| Raul H. Castro Social & Behavioral Sciences | 65 |
| Raymond Hall | 39 |
| Reilly Hall | 48 |
| Renewable Energy Test Facility | 74 |
| Riles | 15 |
| RLSS Warehouse | 98F |
| Rolle Activity Center | 68 |
| Roseberry Apartments | 13A |
| ROTC | 47A |
| School of Informatics Computing & Cyber Sys | 90 |
| Science Annex | 20 |
| Science & Health | 36 |
| Science Lab Facility | 17 |
| Sculpture Lab | 84 |
| Sechrist Hall | 42 |
| SkyView | 87 |
| Social & Behavioral Sciences West | 70 |
| South Apartments | 71 |
| South Beaver School | 93 |
| South Dining | 63 |
| South Heating & Cooling Plant | 67 |
| South Recreation Complex | 85 |
| Southwest Forest Science Complex | 82 |
| Student & Academic Services | 60 |
| Student Athlete High Performance Center | 73A |
| Taylor Hall | 9 |
| Tinsley Hall | 44 |
| The Suites | 75 |
| University Marketing & Operations | 16A |
| University Union Dining Services | 30A |
| University Union Dining Services Expansion | 30D |
| University Union Fieldhouse | 30 |
| University Union Food Court | 30C |
| University Union Student Services | 30B |
| W.A. Franke College of Business | 81 |
| Walkup Skydome | 73 |
| Wettaw Biology & Biochemistry | 88 |
| Wilson Hall | 45 |

| PARKING STRUCTURES: | |
|--|-----|
| High Country Conf. Parking Structure | 58 |
| Hilltop Townhomes Parking Structure | 59 |
| Knoles Drive Parking Structure | 96A |
| Mountain View Hall Parking Structure | 96C |
| San Francisco Street Parking Structure | 96B |
| SkyView Parking Structure | 96G |

BUILDING LIST (NUMERICAL)

| BLDG # | BUILDING NAME: |
|--------|---|
| 1 | Gammage |
| 2 | Blome |
| 3 | North Union |
| 3A | Prochnow Auditorium |
| 4 | Morton Hall |
| 5 | North Hall |
| 6 | Campbell Hall |
| 7A | Beaver Street House |
| 7B | Humphreys Office Building |
| 8 | Bury |
| 9 | Taylor Hall |
| 10 | Old Main |
| 11 | Ashurst |
| 12 | Geology |
| 13 | Geology Annex |
| 13A | Roseberry Apartments |
| 14 | Native American Cultural Center |
| 15 | Riles |
| 16 | Communication |
| 16A | University Marketing & Operations |
| 17 | Science Lab Facility |
| 18 | Liberal Arts |
| 18A | Biology Greenhouse |
| 19 | Physical Sciences |
| 20 | Science Annex |
| 21 | Biological Sciences |
| 21B | Biological Sciences Annex |
| 22 | Peterson |
| 23 | Babbitt Academic Annex |
| 23A | Education Annex |
| 24 | North Heating & Cooling Plant |
| 25 | Health & Learning Center |
| 26 | Lumberjack Stadium |
| 27 | Adel Mathematics |
| 27A | Eastburn Education Center |
| 28 | Institute for Human Development |
| 29 | Cline Library |
| 30 | Ernest Calderon Learning Community |
| 30A | University Union Fieldhouse |
| 30B | University Union Dining Services |
| 30C | University Union Food Court |
| 30D | University Union Dining Services Expansion |
| 31 | Gillenwater Hall |
| 32 | Hospitality Resource & Research Center |
| 33A | HRM/Hughes Hotel & Restaurant Mgmt. |
| 35 | Bookstore |
| 36 | Science & Health |
| 37 | Performing & Fine Arts |
| 37A | Ardrey Auditorium |
| 38 | Cowden Learning Community |
| 39 | Raymond Hall |
| 40 | McDonald Hall |
| 41 | Honors Living & Learning Community |
| 42 | Sechrist Hall |
| 43 | Gateway Student Success Center |
| 44 | Tinsley Hall |
| 45 | Wilson Hall |
| 46 | Allen Hall |
| 47 | Atmospheric Observatory/Lutz Telescope |
| 47A | ROTC |
| 48 | Reilly Hall |
| 49 | Anthropology Laboratory |
| 50 | Campus Heights Apartments |
| 50A | International Pavilion |
| 50B | McKay Village |
| 51 | Babbitt Administrative Center |
| 52 | Bilby Research Center |
| 53 | Gabaldon Hall |
| 54 | Information Systems |
| 54B | Information Systems Building Annex |
| 55 | Mountain View Hall |
| 56 | Applied Research & Development |
| 57 | Printing Services |
| 58 | High Country Conference Center |
| 58A | Drury Inn |
| 59 | Hilltop Townhomes |
| 60 | Student & Academic Services |
| 61 | Learning Resource Center |
| 62 | McConnell Hall |
| 63 | South Dining |
| 64 | du Bois Center |
| 65 | Raul H. Castro Social & Behavioral Sciences |
| 66 | Health Professions |
| 67 | South Heating & Cooling Plant |
| 68 | Rolle Activity Center |
| 69 | Engineering & Technology |
| 70 | Social & Behavioral Sciences West |
| 71 | South Apartments |
| 72 | Nursing |
| 73 | Walkup Skydome |
| 73A | Student Athlete High Performance Center |
| 74 | Renewable Energy Test Facility |
| 75 | The Suites |
| 76 | Laboratory Research |
| 77 | Facility Services |
| 77A | Facility Services Annex |
| 78 | Chemical Storage Facility |
| 79 | Greenhouse Complex |
| 80 | Ceramics Complex |
| 80B | Ceramics Clay Mixing Facility |
| 81 | W.A. Franke College of Business |
| 82 | Southwest Forest Science Complex |
| 82B | Hogan |
| 83 | KNAU & Campus Transit |
| 84 | Sculpture Lab |
| 85 | South Recreation Complex |
| 86 | Aquatic and Tennis Complex |
| 87 | SkyView |
| 88 | Wettaw Biology & Biochemistry |
| 89 | Fountain Residence |
| 90 | School of Informatics Computing & Cyber Sys |
| 91 | Centennial (Parking & Human Resources) |
| 92 | Ponderosa |
| 93 | South Beaver School |
| 94 | Milton Property |
| 95 | Pine Ridge Village |
| 96 | Huffer Lane Acquisition |
| 97 | CECMEE Field Station |
| 98A | Police Department (NAU) |
| 98B | Purchasing Services |
| 98C | Engineering Research |
| 98D | Extended Campus Operations Center |
| 98F | RLSS Warehouse |
| 99B | Grannys |
| 99C | Grannys C-House |
| 99D | Grannys D-Duplex |

| PARKING STRUCTURES: | |
|--|-----|
| High Country Conf. Parking Structure | 58 |
| Hilltop Townhomes Parking Structure | 59 |
| Knoles Drive Parking Structure | 96A |
| San Francisco Street Parking Structure | 96B |
| Mountain View Hall Parking Structure | 96C |
| SkyView Parking Structure | 96G |