

Facility Services Planning and Development
PO Box 5637
Flagstaff, AZ 86011

928.523.4227
928.523.9441 fax
www.nau.edu/facility-services

NEW SIDEWALK ALONG KNOLES NEAR GABALDON HALL
NAU Project #08.030.181
May 6, 2021

CLARIFICATION #1

PART 1 – GENERAL

- A. Date of Issue: May 6, 2021.
- B. The following clarifications are for informational purposes only and are in response to questions received regarding the Hard Bid procurement for NAU Project #08.030.181– New Sidewalk Along Knoles Near Gabaldon Hall.

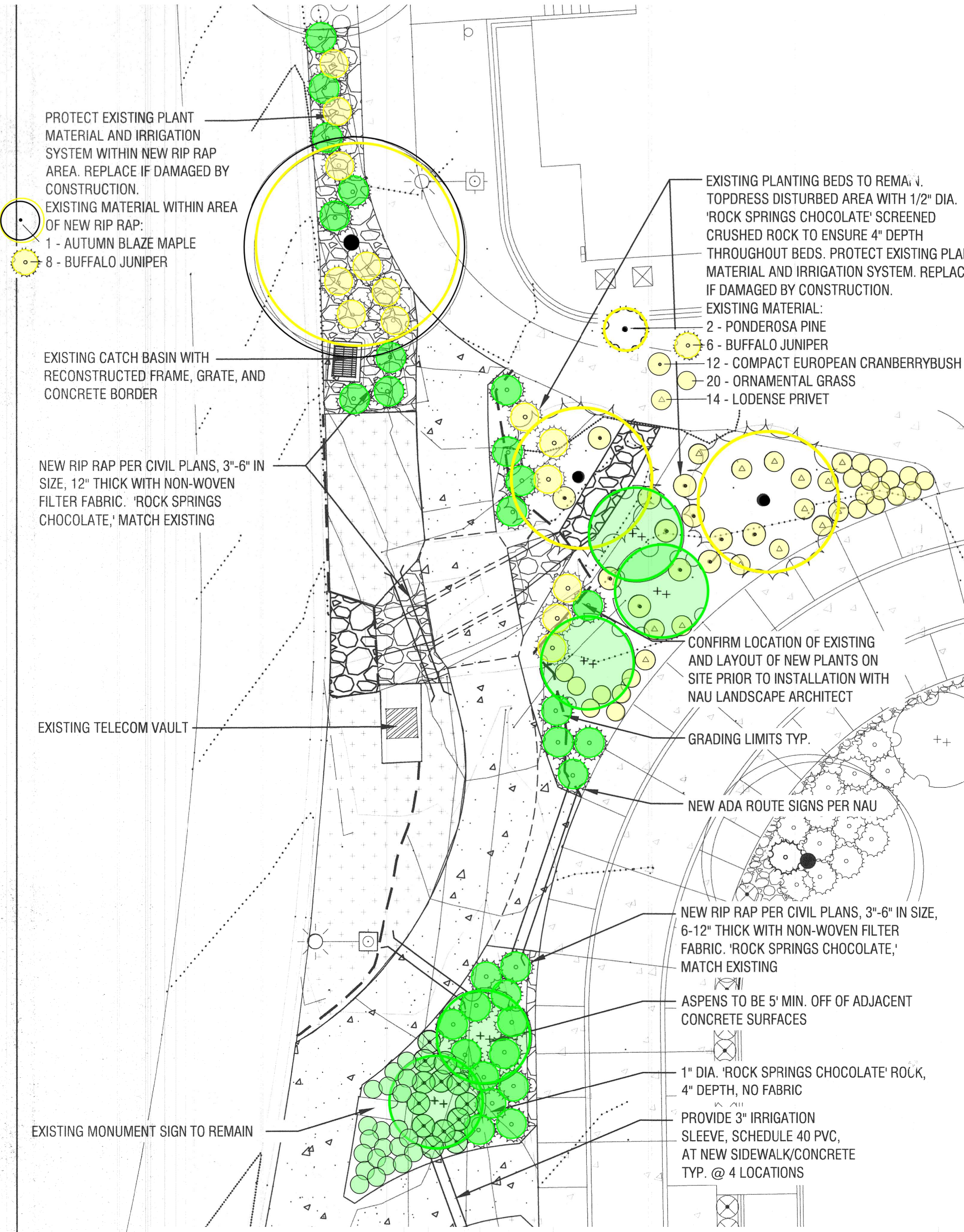
PART 2 – CLARIFICATIONS

- A. **Question:** Please clarify per Drawing L1 call out for landscape plants not shown on the Landscape legend. Also the plants on the East side of the existing sidewalk are they all existing and no new plants in this area?
- Answer:** *On the attached colored detail of Drawing L1 – the plants shown in yellow are existing and are to remain and be protected during construction. The plants to remain do not appear in the Legend. Only the plants shown in green are in the Legend as these are new and to be included as part of this project.*
- B. **Question:** Per landscape notes #3 – Landscape contractor to be responsible for verification of plant quantities. Plans take precedence over Qty's on legend. It is hard to determine what is new planting verses what is existing on Landscape sheet. Please clarify what plants and trees are new and their common name, can you provide a clearer plan.
- Answer:** *As noted in the answer to Question A above, the existing plants are shown in yellow and the new plants to be added are shown in green. The common names for the plants are already included in Drawing L1.*
- C. **Question:** During the site walk a question was raised regarding whether the re-striping of the crosswalk at the intersection of the existing pedway sidewalk and the fire access lane is included in the scope of work for this project.
- Answer:** *As noted on the drawings, only the re-striping for the crosswalk at the intersection of the fire access lane and Knoles Drive is included in the scope of work for this project.*

D. **Question:** Should bidders include costs for materials testing and special inspections in their cost proposal?

Answer: *NAU will contract directly with vendors to conduct materials testing and special inspections. Offerors do not need to include these costs in their cost proposal.*

END CLARIFICATION #1



PROTECT EXISTING PLANT MATERIAL AND IRRIGATION SYSTEM WITHIN NEW RIP RAP AREA. REPLACE IF DAMAGED BY CONSTRUCTION.

EXISTING MATERIAL WITHIN AREA OF NEW RIP RAP:

- 1 - AUTUMN BLAZE MAPLE
- 8 - BUFFALO JUNIPER

EXISTING CATCH BASIN WITH RECONSTRUCTED FRAME, GRATE, AND CONCRETE BORDER

NEW RIP RAP PER CIVIL PLANS, 3"-6" IN SIZE, 12" THICK WITH NON-WOVEN FILTER FABRIC. 'ROCK SPRINGS CHOCOLATE,' MATCH EXISTING

EXISTING TELECOM VAULT

EXISTING MONUMENT SIGN TO REMAIN

EXISTING PLANTING BEDS TO REMAIN. TOPDRESS DISTURBED AREA WITH 1/2" DIA. 'ROCK SPRINGS CHOCOLATE' SCREENED CRUSHED ROCK TO ENSURE 4" DEPTH THROUGHOUT BEDS. PROTECT EXISTING PLANT MATERIAL AND IRRIGATION SYSTEM. REPLACE IF DAMAGED BY CONSTRUCTION.

EXISTING MATERIAL:

- 2 - PONDEROSA PINE
- 6 - BUFFALO JUNIPER
- 12 - COMPACT EUROPEAN CRANBERRYBUSH
- 20 - ORNAMENTAL GRASS
- 14 - LODENSE PRIVET

CONFIRM LOCATION OF EXISTING AND LAYOUT OF NEW PLANTS ON SITE PRIOR TO INSTALLATION WITH NAU LANDSCAPE ARCHITECT

GRADING LIMITS TYP.

NEW ADA ROUTE SIGNS PER NAU

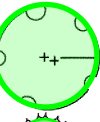



NEW RIP RAP PER CIVIL PLANS, 3"-6" IN SIZE, 6-12" THICK WITH NON-WOVEN FILTER FABRIC. 'ROCK SPRINGS CHOCOLATE,' MATCH EXISTING

ASPENS TO BE 5' MIN. OFF OF ADJACENT CONCRETE SURFACES

1" DIA. 'ROCK SPRINGS CHOCOLATE' ROCK, 4" DEPTH, NO FABRIC

PROVIDE 3" IRRIGATION SLEEVE, SCHEDULE 40 PVC, AT NEW SIDEWALK/CONCRETE TYP. @ 4 LOCATIONS

LANDSCAPE LEGEND:

SYMBOL	QTY.	MATURE SIZE/ COMMENTS	COMMON NAME	BOTANICAL NAME	INITIAL SIZE
	5	SINGLE STEM	QUAKING ASPEN	POPULUS TREMULOIDES	2.5" CAL. B&B
	13	2.5' H. X 2.5' W.	KELSEY DOGWOOD	CORNUS SERICEA 'KELSEYI'	5 GAL.
	30	1' H. X 5' W.	BUFFALO JUNIPER	JUNIPERUS SABINA 'BUFFALO'	5 GAL.
	21	18" H. X 24" W.	JOHNSON'S BLUE GERANIUM	GERANIUM 'JOHNSON'S BLUE'	1 GAL.